



宁波港城华邑酒店  
HUALUXE® Ningbo Harbor City



HUALUXE  
HOTELS AND RESORTS

華邑酒店及度假村®

IHG® 旗下酒店

# 关于华邑®酒店及度假村



华邑酒店及度假村由洲际酒店集团创办于2012年，是真正意义上以国际集团做支撑，根据中国消费者习惯所倾力打造的国际高端酒店品牌。“华邑”二字意味着中华有识之士及各界菁英相聚于此，英文名称“HUALUXE”中的“HUA”则取自汉字“华”，而“LUXE”则象征着高端奢华的品质。华邑®旗下酒店极具中华文化特色，深刻洞悉国人餐饮及商务社交之需求，热忱发扬以“食”和“聚”为核心的中华待客之道的艺术。

关于洲际酒店集团 英国洲际酒店集团PLC [伦敦股票交易所：IHG，纽约股票交易所：IHG] 是世界上最具全球化并拥有客房数最多的酒店集团。分布全球100多个国家和地区([www.ihg.com](http://www.ihg.com))。该集团拥有多个闻名遐迩的酒店品牌，其中包括洲际酒店及度假村、皇冠酒店及度假村、假日酒店及度假村、快捷假日酒店、Staybridge Suites和Candlewood Suites





## 酒店地理位置



Location

礼尊和进

HUALUXE Ningbo Harbor City is the new upscale, 5-star hotel brand of InterContinental Hotels Group, with world-renowned management system as the basis of excellence. Hotel located in the most economically developed Beilun District, with back forward to Zhoushan Harbor and Ningbo Economic Development Zone. It has excellent geographic position, and located in Fubang Square trading area, a short walk away to Metro Station.



Location 名称	Distance 距离	Vehicle 交通工具	Time 车程时间
Shanghai Pu Dong Airport 上海浦东机场	260km 260公里	Car 汽 车	3Hours 3小时
Shanghai Hong Qiao Airport 上海虹桥机场	230km 230公里	Car 汽 车	2Hrs30mins 2.5小时
Ningbo Lishe Airport 宁波栎社国际机场	47km 47公里	Car 汽 车	40mins 40分钟
Ningbo Station 宁波火车站	35km 35公里	Car 汽 车	40mins 40分钟
Hangzhou Xiaoshan Airport 杭州萧山国际机场	160km 160公里	Car 汽 车	1Hr50mins 110分钟
Putuo Mountain Spot 普陀山景区	109km 109公里	Car 汽 车	88mins 88分钟
Downtown 市中心	48km 48公里	Car 汽 车	45mins 45分钟



## 酒店周围景点 Scenery nearby



## 酒店周围景点-九峰山

## Scenery nearby——Jiufeng Mountain

九峰山旅游区位于宁波市北仑区大碇街道和柴桥街道之间，九峰山地处江南大陆架的最东端，属天台山脉太白山支脉，叠峰连冈，奇峰挺九，因此得名。九峰山方圆数十里，南托太白山，北濒东海，大有山海之"经"可念，可谓人间仙景。曾有诗赞道："远眺参差九点峰，青山削出翠芙蓉"。不久九峰山将变成宁波美丽的后花园。

Jiufeng Mountain, located on Chuanshan Peninsula, is a mountain at the easternmost end of the mainland in regions south of the Yangtze River, separated from Putuo Mountain by sea. Hangzhou Bay and Xiangshan Port are located respectively on the south and north side. it is a mountain climbing base and one of the ten major leisure tourism bases and ecological scenic areas in Ningbo as well as the most beautiful tourist destination in Zhejiang.

距酒店From Hotel: 4km



# 酒店周围景点-梅山湾沙滩公园

## Scenery nearby——Meishan Bay Beach Park

梅山湾沙滩公园位于北仑区春晓镇宁波经济开发区,三面环海,面积**128**公顷;主要由暗礁相连的**4**座小岛组成,有**4**大特色景观:红岩赤礁、母亲岛、海上长城、银光海滩。**4**座小岛的山体呈鲜红色,山基部分长期受海潮侵蚀,逐渐演变成暗红色或赤色。红岩石质疏松 易被风化或侵蚀,所以小岛的**红岩赤礁**千姿百态、风情万种。

Meishan Bay Beach Park, located in Chunxiao Town, Binhai New City, Beilun District, about 40 km away from the central urban area of Ningbo City and covering an area of about 120 hectares, nestles under a mountain and near a river and has beautiful mountain and sea scenery. It is composed of 4 small islands connected by submerged rocks and provided with characteristic landscape such as red rocks and reefs, mother islands, marine great walls and bright sea beaches.

距酒店From Hotel: 20km  
车程By Driving: 29mins





## 酒店周围景点-天童禅寺阿育王寺

### Scenery nearby——Tiantong Ayuwang Temple

阿育王寺和天童寺在南宋时都名列天下五山，是当时最上等的禅寺。阿育王寺最珍贵之处在于寺内的舍利塔。相传阿育王造塔，在中华有十九座，其一即为“明州鄞县育寺塔”。

Tiantong Temple is located on the ascending slope at the foot of the Taibai Mountain, It is known as "Buddha's Holy Land in Southeast China". It is one of the ten sacred temples of the Buddhist Chan sect, having 730 houses of the architectural style formed in the Ming Dynasty.

Ayuwang Temple, near the Ningbo-Beilun highway. Ayuwang is the Chinese name for King Ashoka, the great unifier of India. He had once been a brutal conqueror, but after converting to Buddhism, he supported and spread the Buddha's teachings until his death in 232 B.C.

距酒店From Hotel: 20km 车程  
By Driving: 27mins



## 酒店周围景点-普陀山

### Scenery nearby——Putuo Mountain

普陀山，与山西五台山、四川峨眉山、安徽九华山并称为中国佛教四大名山，是观世音菩萨教化众生的道场。普陀山是舟山群岛1390个岛屿中的一个小岛，形似苍龙卧海，面积近13平方公里，与舟山群岛的沈家门隔海相望，素有“海天佛国”、“南海圣境”之称，是首批国家重点风景名胜区。

Putuo Mountain (普陀山) located on an island in the East China Sea, this mountain is one of the four Buddhist shrines in the country, which features many temples and nunneries. Boasting one of the Top Four Holy Buddhist Mountains in China and also a top-level tourist attractions highlighted with its culture and history, is located in Zhoushan (舟山) and covers an area of 12.5 square kilometers.

距酒店From Hotel: 100km

车程By Driving: 90mins



# 团建推荐Teambuilding Recommendation

## -- 游步道Hiking

礼尊和迹

### ☐ 总台山森林步道

海拔：300m 全长：13000m

所处区域：白峰郭巨 强度：五星

访浙东海防遗迹可俯瞰北仑港码头、梅山港、螺头水道、峙头洋观风力发电塔群

### ☐ 孝子岭古道、小港依山村茅洋寺森林步道

海拔：230m 全长：6500m

所处区域：大碇先锋村、小港依山村强度：四星

路况：古山道石块路林间小路特色：寻古探幽参禅礼佛

### ☐ 虾蜡龙潭森林步道

海拔：250m 全长：6000m

所处区域：白峰下阳村 强度：四星

路况：原始山路林间小路卵石路；青山绿水幽潭飞瀑可远眺梅山岛、象山港

### ☐ 日头山森林步道

海拔：406m 全长：6500m

所处区域：白峰阳东村 强度：四星

路况：原始山路茶林小路石子路

景观：丛林茶园田园风光水库

特色：山海风光观白峰、梅山全景望舟山、象山诸岛





# 团建推荐Teambuilding Recommendation

## -- 宁波国际赛道Ningbo International Speedpark

宁波国际赛道位于宁波市北仑区春晓爬山岗区域，占地面积**1111**亩，总投资**9.5**亿元。赛道邀请世界知名赛道设计师和建造师阿兰·威尔逊担纲总设计，历时一年半匠心打造，是拥有国际汽联**FIA**认证的二级赛道，可承办国际国内高级别的赛车赛事。宁波国际赛道于**2017年10月15日**盛大启幕，专注于赛道运营、赛事承办、赛车娱乐体验等。

Ningbo International Speedpark is a FIA and FIM Grade 2 certified road course located in Chunxiao near to the city of Ningbo, China. The 4.0 km long track was completed in 2017 and runs in an anti-clockwise direction.

距酒店From Hotel: 20km

车程By Driving: 25mins



# 团建推荐Teambuilding Recommendation

## -- 青年体育公园Youth Sports Park

宁波北仑青年体育公园占地面积约3.8万平方米，建有11个篮球场、1个8人制足球场、3个5人制足球场、5米宽环形跑道及多功能区等配套设施。

Ningbo Beilun Youth Sports Park covers an area of 38,000 square meters, with 11 basketball courts, 1 8-a-side football field, 3 5-a-side football field, 5-meter-wide annular-track and multi-function area.

距酒店From Hotel: 100m





# 本地特色 Local Specialty

礼尊和迹



三山玉叶  
Sanshan Yuye Tea



Beilun Jintan  
北仑金柑



*Echinotriton chinhaiensis* 珍稀动物；镇海棘螈



A smiling male hotel employee in a red uniform stands next to a car with its door open. He is holding a white folder with the Hualuxe logo and Chinese text. The background shows a blurred outdoor setting with trees and buildings.

## 酒店亮点 Hotel Feature

  
HUALUXE  
HOTELS AND RESORTS  
華邑酒店及度假村

# 独特卖点 Hotel USP



- 345间客房，灵活多变的房型。345rooms, flexible categories, urban city view.
- 大厅VIP接待区予大会组织者、会议客人专属签到区域。VIP Lounge for group reception, an exclusive area for conference organizers.
- 1060平米无柱宴会厅、至多可达14个分会场和多功能会议室满足大中小不同会议需求。The 1060m<sup>2</sup> of luxurious, pillarless ballroom and 14 function conference rooms, meet different needs of organizers.
- 大宴会厅可容纳车辆直接进入，适合各类汽车类会议及活动。The Ballroom is available for car exhibition.
- 周边繁华商圈步行可达，满足住店客人各类生活及娱乐需求。Located in CBD, surrounded by business area, easy access to shopping malls

# 会议室参数 Meeting/Event Capacity



场 地 Meeting/Banquet Capacity Sheet	建筑面积 Area(m²)	长度×宽度×层高 (米) Size Length × Width × Height (M)	楼层 Floor	宴会式 (无舞台) Banquet (No Stage)	酒会型 Reception	剧院式 Theatre	课桌式 Class Room	鱼骨型 Fish Bone	U型 U –Shape	回型 Hollow Square	董事会型 Boardroom
华邑宴会厅 HUALUXE Ballroom	1062	45.2 × 23.5x10	1	500	600	800	450	440	260	280	N/A
华邑宴会厅 1 HUALUXE Ballroom 1	278	23.5 × 11.8x10	1	150	180	200	140	120	60	72	60
华邑宴会厅 2 HUALUXE Ballroom 2	513	23.5 × 21.8x10	1	250	300	420	200	240	110	130	80
华邑宴会厅 3 HUALUXE Ballroom 3	271	23.5 × 11.5x10	1	120	150	180	110	100	40	58	60
里仁宴会厅 Liren Ballroom	393	23.8 × 16.5x4	1	240	260	300	200	210	80	100	N/A
里仁宴会厅1 Liren Ballroom 1	176	16.5 × 10.6x4	1	80	100	130	80	84	35	40	40
里仁宴会厅 2 Liren Ballroom 2	217	16.5 × 13.1x4	1	120	160	170	120	140	43	60	50
多功能厅 1 Function Room 1	67	9 × 7.4x4	1	60	30	60	30	63	36	42	20
多功能厅 2 Function Room 2	93	9.4 × 9.8x4	1	60	45	80	45	63	36	42	24
多功能厅 3 Function Room 3	68	9.5 × 7.1x4	1	60	30	60	30	63	36	42	20
多功能厅 5 Function Room 5	82	9 × 9.2x4	1	60	40	55	25	84	48	54	18
多功能厅 6 Function Room 6	41	6 × 6.8x4	1	20	20	30	16	28	14	16	8
多功能厅 7 Function Room 7	43	7.1 × 6x4	1	20	20	30	16	28	14	16	8
多功能厅 8 Function Room 8	43	7.1 × 6x4	1	20	20	30	16	28	14	16	8
多功能厅 9 Function Room 9	330	19.2 × 17.2x3	1	180	220	240	120	100	72	78	N/A



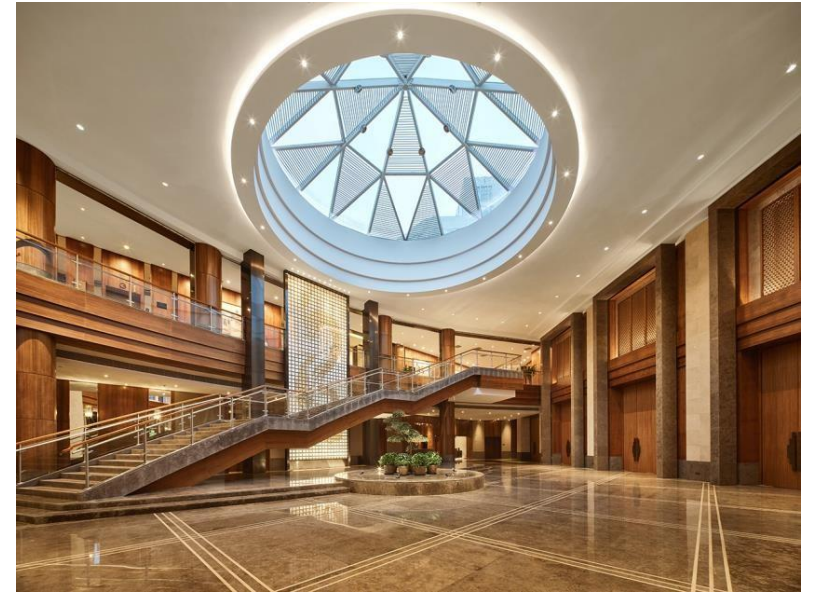
# 华邑宴会厅 HUALUXE Ballroom

礼尊和迎



1060平，层高10米无柱，可进车

No pillars space of 1060m<sup>2</sup> and available for car exhibition



宴会厅前厅（300m<sup>2</sup>）Foyer

# 多功能厅 Function Rooms

礼尊和迎



14 个大小不一的多功能会议室及分会场，满足各类会议需求  
More than 14 meeting rooms and breakouts to meet different needs



# 酒店房型 Room Category

礼尊和达

Room Category 房型	Size (SQM) 面积	Number 数量
Superior Room 高级房	41	68K/97T
Premium Room 豪华房	51	53K/10T
Executive Room 行政房	41/51	78K/10T
Superior Suite 高级套房	56	14
Premium Suite 豪华套房	70/78	10
Executive Suite 行政套房	92	2
Embassy Suite 大使套房	156	2
Presidential Suite 总统套房	346	1
Total		345





# 酒店房型 Room Category

礼尊和达



高级大床房  
King Bed Standard Room



行政酒廊 Club Lounge

# 鲜艳全日餐厅

## Xian Yan All Day Dining Restaurant

礼尊和逸

➤ 鲜艳餐厅将东西方饮食文化完美交融，设有多个开放式烹饪台，现场为您烹制精选时令食材。特设营运至深夜的夜宵面档，呈奉中式夜宵的魅力。

➤ Xian Yan is a perfect fusion of eastern and western food culture. It features several open cooking stations where selected seasonal food is freshly prepared. The unique noodle bar operates till midnight, offering exquisite local flavors and allowing guests to enjoy the charm of an authentic late night Chinese supper.



# 彩丰楼-中餐厅

## CAI FENG LOU - Chinese Restaurant

礼尊和迎

➤ 彩丰楼的设计灵感源自中国千年之久的爱鸟之情，充满了优雅 和丰富的色彩，既彰显了精致的现代感，又唤起了对中国传统 的温暖怀旧之情。餐厅以奢华和独特的主题为特色，从精美的 菜单到无可挑剔的个性化服务，为宾客呈现中国古往今来的美食佳肴，使宾客流连忘返。

➤ CAI FENG LOU inspired by the Chinese' millennia long love affair with bird, full of grace and rich in color, and carries a note of exquisite modernity, whilst evoking a warm nostalgia for China's traditions. The restaurant will feature an extravagant and thematically unique motif, from the exquisite menu section to the impeccable personalized service, CAI FENG LOU will make its mark on guests offering the best of China's past, present and future.





# 聚膳邑 LUXE Gathering

礼尊和达

- 电梯可直达
- 配备KTV房和棋牌房
- 运用传承地方特色的历史元素为商务和私人社交聚会提供一种华丽的气氛,为商务社交及私人聚会度身打造专属的私人空间。

Created by HUALUXE as a brand signature, LUXE Gathering is a one-stop destination combining fine dining, meetings and entertainment(such as KTV and Mahjong) for business and private gatherings, where HUALUXE guests receive an exclusive, super premium experience.

Our one-stop service offers a range of activities guests may choose to enjoy prior to and after a meal. The dedicated HUALUXE Food and Beverage Manager and star chef are pleased to create customized guest experiences.

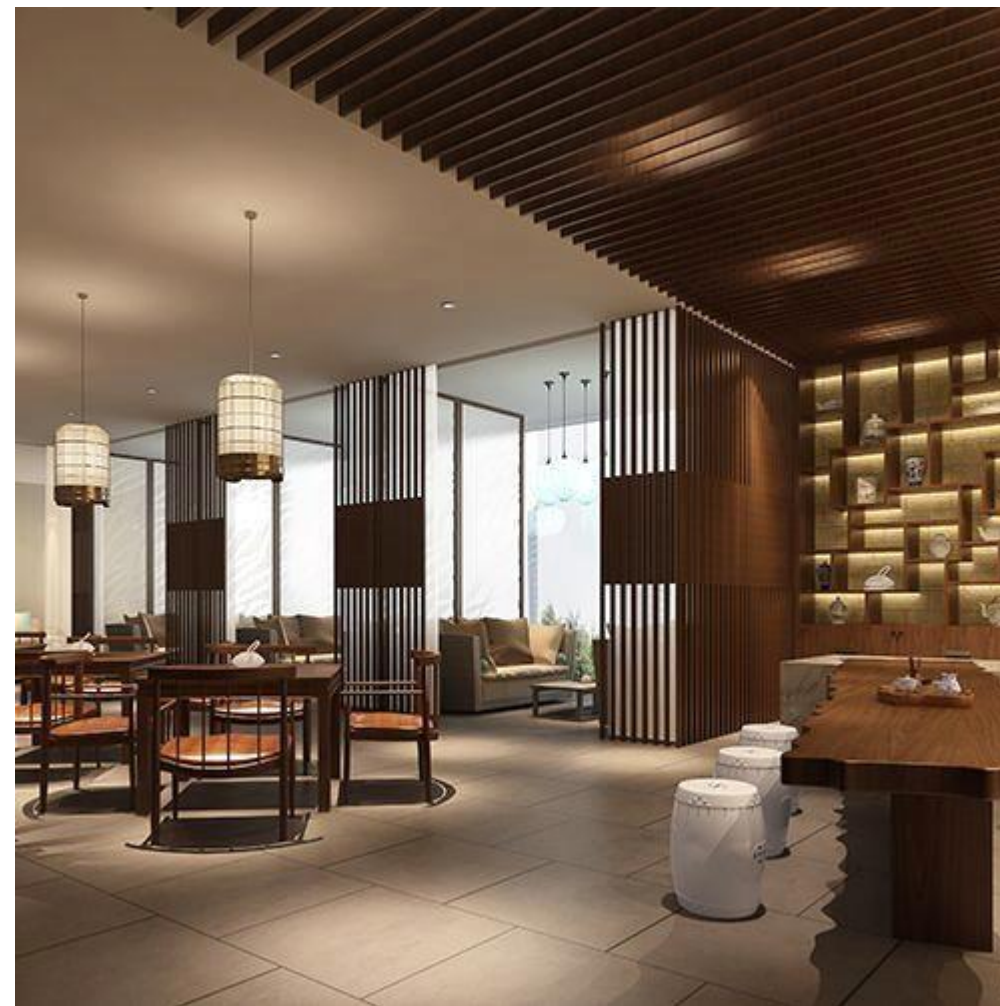


## 举茗邑 LUXE Tea

礼尊和达

➤ 举茗邑，是华邑®为您的商务和社交度身定制的专属空间， 供静谧交谈的私密会晤之所，会客品茗,尽显尊贵。在您的 会晤时刻，我们会奉上贴心设计的茶点套餐，精良的文具 纸张，让商务洽谈的细节尽善尽美。专业茶艺大师，为您 带来精彩演绎的茶道表演和新茶试饮。

LUXE Tea is a HUALUXE signature designed specifically for the discussing of business, where guests take part in meetings in a discreet environment while enjoying authentic Chinese fine tea. From the themed tea sets for special occasions to the finest stationeries, no detail is left unattended. Certified tea masters perform tea ceremonies and offer seasonal tea tasting.



## 大堂酒廊Lobby Lounge

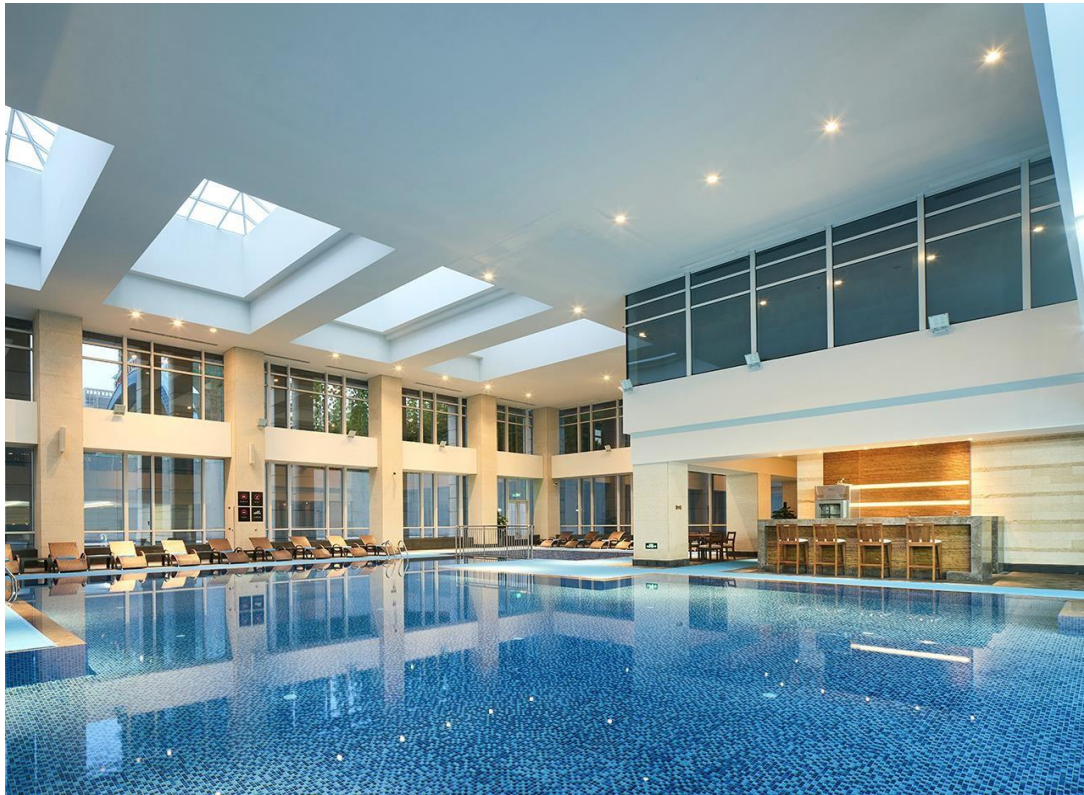
- 雅致的景观设计、隐约舒缓的音乐、清新自然的华邑®特色香氛，大堂酒廊让宾客在亲近自然又不失奢华的格调中一边会客，一边享受高品质中西茶饮。
- With its elegant landscape design, soothing music and refreshing HUALUXE scent, the Lobby Lounge is an ideal venue for casual business meetings and social gatherings where exquisite drinks and snacks are served.





# SPA和健身中心 SPA & Fitness Center

礼尊和达



礼尊和迹

谢谢  
Thank you

